



## Consolite® Technology Ltd

St. Martins Business Park, Bells Lane, Zeals, Wiltshire, BA12 6LY, UK

Tel: +44 (0) 1747 840900 - E mail: sales@consolite.co.uk

Certified to ISO9001:2015

### CTL-424 Recessed Ceiling LED Luminaire

A range of interior ceiling mounted, recessed, general lighting LED luminaires for a wide variety of applications, offering different lighting modes. Supplied with adjustable mounting brackets to fit a variety of ceiling types.

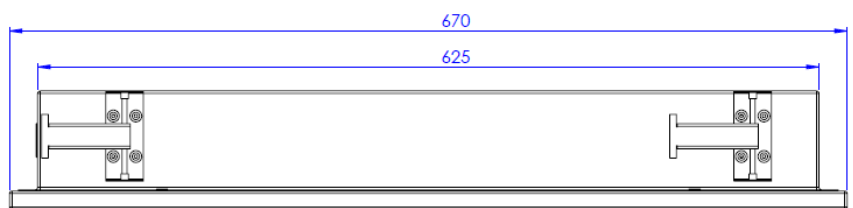
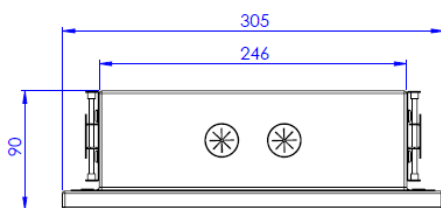
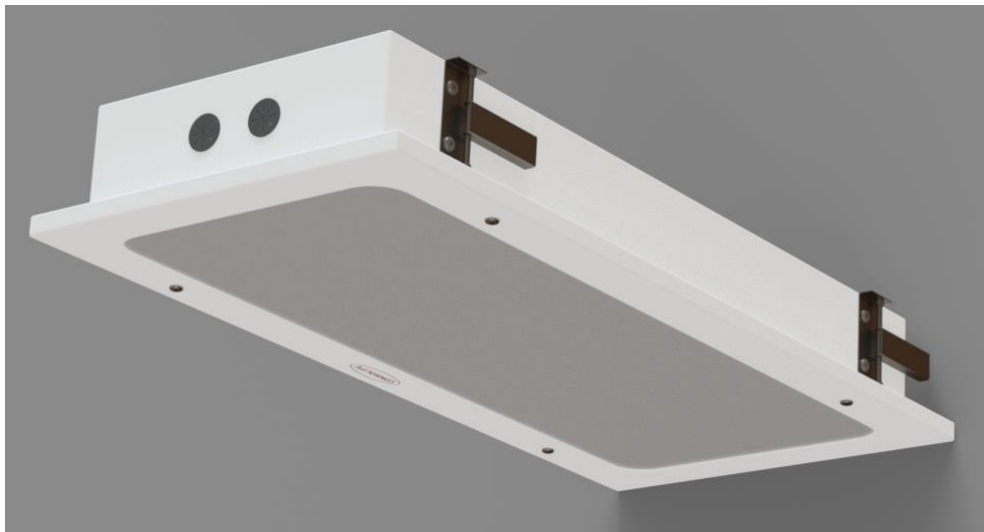
#### Features

LED technology - low power, high reliability  
High output, neutral colour white light  
Rugged construction, steel housing  
Recessed mounting in various ceiling types

#### Options

Second mode low level dark adaptation  
NVG compatibility  
Stainless steel IP66 version for food preparation areas

Two sizes broadly match the outputs of 2 x 18W (2ft) and 2 x 36W (4ft) fluorescent units. Smaller size shown below:





## Consolite® Technology Ltd

St. Martins Business Park, Bells Lane, Zeals, Wiltshire, BA12 6LY, UK

Tel: +44 (0) 1747 840900 - E mail: sales@consolite.co.uk

Certified to ISO9001:2015

### Part Number Guide

Part numbering has the following structure. All take the form CTL-424-XYZ, where X,Y,Z have the following values.

X: Control Type	Y: Modes & NVG	Z: 2 <sup>nd</sup> Mode
0 – Fixed output	1 – 2ft Single Non-NVG	0 – None
1 – Dimmable by room dimmer	2 – 2ft Dual Non-NVG	1 – Low Level White
2 – Local dimming	3 – 2ft Dual NVG	2 – Low Level White Enhanced
3 – Fixed output + battery back-up	4 – 4ft Single Non-NVG	3 – Low Level Green
4 – Dimmable by room dimmer + battery back-up	5 – 4ft Dual Non-NVG	4 – Low Level Red
5 – Local dimming + battery back-up	6 – 4ft Dual NVG	

Common parameters are:

P/No	Equivalent Fluorescent	Output (lm)	IP	Voltage V AC	Power W	Overall Dims mm	Ceiling Cut-Out Dims mm	Weight kg
2ft units	2 x 18W	1800	43	96 – 275	20	670 x 305 x 90	630 x 285	2.5
4ft units	2 x 36W	3600	43	96 – 275	40	1280 x 305 x 90	1240 x 285	4.5

### Examples

Single mode, bright white, 1800lm unit is **CTL-424-010**

Dual mode, bright white/NVG low level white, dimming by room dimmer, battery back-up is **CTL-424-431**

Stainless steel variants are also available with a separate numbering system. Please enquire for details.

### Standards

Electrical safety:	EN60598
EMC:	DEF STAN 59-411
Photobiological:	EN62778 / 62471
Environmental:	EN60598 & EN60529
NVG compatibility:	Def Stan 02-587 Part 3

### Light output distribution

IES/LDT files available on request

Consolite is a long established leader in night vision lighting for military platforms, designing and manufacturing lighting systems for NVGs for over 25 years, including lighting for aircraft, ships and ground use.

Consolite's design facility permits the calculation of lighting requirements for spaces from a single compartment to an entire ship.

Consolite's test facility includes the latest equipment required for testing night vision compliance to any relevant standard plus goniophotometric equipment for full 360 degree light characterisation of luminaire output.