



## Consolite® Technology Ltd

St. Martins Business Park, Bells Lane, Zeals, Wiltshire, BA12 6LY, UK

Tel: +44 (0) 1747 840900 - E mail: sales@consolite.co.uk

www.consolite.co.uk - Certified to ISO9001:2015

### CTL-371 General lighting luminaire, LED, Exterior

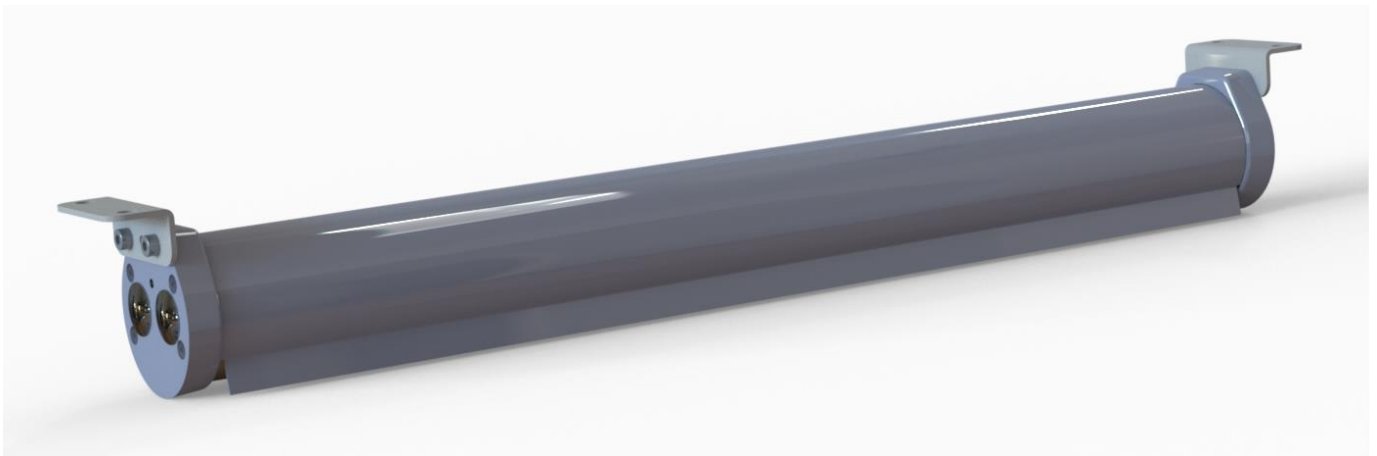
A range of surface mounting, exterior, general lighting LED luminaires for a wide variety of applications, offering different lighting modes. Robust design and construction makes them suitable for the most challenging of environments.

#### Features

LED technology - low power, high reliability  
High output, neutral colour white light  
Rugged construction, extruded aluminium housing  
Painted Grey for full protection  
IP67 rated for full weatherproofing  
Simple installation - wired ready for connection

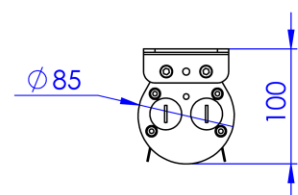
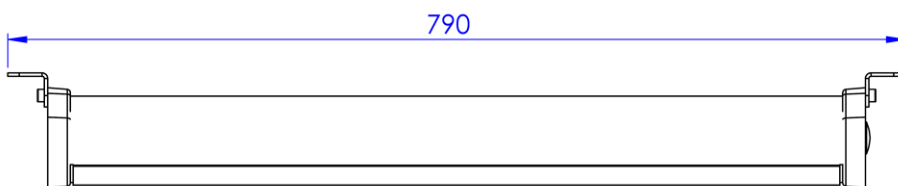
#### Options

Second mode red or low level white  
NVG compatibility  
115V or 230V AC  
Variety of mounting options  
Variety of finishes  
Various cable gland options (M25 threaded)  
Side shades of varying lengths



Two sizes broadly match the outputs of 2 x 18W and 2 x 36W fluorescent units.

Smaller unit with side shades shown below.





# Consolite® Technology Ltd

St. Martins Business Park, Bells Lane, Zeals, Wiltshire, BA12 6LY, UK

Tel: +44 (0) 1747 840900 - E mail: sales@consolite.co.uk

www.consolite.co.uk - Certified to ISO9001:2015

## Part Number Guide

The commonest variants are show below. Other combinations available on request.

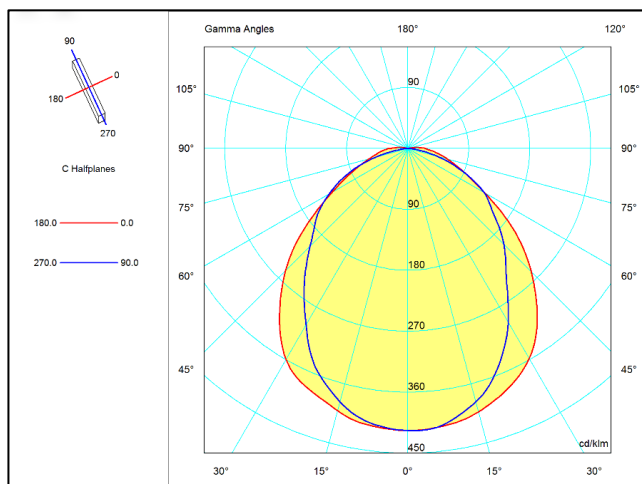
P/No	Function	Equivalent fluorescent	Output lm	IP	Voltage V AC	Power W	Dimensions mm	Weight kg
CTL-371-010	Single mode – full bright white	2 x 18W	1600	67	115	25	792 x 85 x 100	3.5
CTL-371-020	Dual mode – bright white + LLW	2 x 18W	1600	67	115	25	792 x 85 x 100	3.5
CTL-371-021	Dual mode – bright white + LLW, 2 neutrals	2 x 18W	1600	67	115	25	792 x 85 x 100	3.5
CTL-371-022	Dual mode – bright white + red safety	2 x 18W	1600	67	115	25	792 x 85 x 100	3.5
CTL-371-030	Dual mode – bright white + LLW NVG	2 x 18W	1600	67	115	25	792 x 85 x 100	3.5
CTL-371-031	Dual mode – bright white + LLW NVG, 2 neutrals	2 x 18W	1600	67	115	25	792 x 85 x 100	3.5
CTL-371-033	Dual mode – bright white + LLW enhanced NVG output	2 x 18W	1600	67	115	25	792 x 85 x 100	3.5
CTL-371-040	Single mode – full bright white	2 x 36W	3200	67	115	48	1260 x 85 x 100	5.2
CTL-371-050	Dual mode – bright white + LLW	2 x 36W	3200	67	115	48	1260 x 85 x 100	5.2
CTL-371-051	Dual mode – bright white + LLW, 2 neutrals	2 x 36W	3200	67	115	48	1260 x 85 x 100	5.2
CTL-371-052	Dual mode – bright white + red safety	2 x 36W	3200	67	115	48	1260 x 85 x 100	5.2
CTL-371-060	Dual mode – bright white + LLW NVG	2 x 36W	3200	67	115	48	1260 x 85 x 100	5.2
CTL-371-061	Dual mode – bright white + LLW NVG, 2 neutrals	2 x 36W	3200	67	115	48	1260 x 85 x 100	5.2
CTL-371-063	Dual mode – bright white + LLW enhanced NVG output	2 x 36W	3200	67	115	48	1260 x 85 x 100	5.2

EX-rated variants are also available, shown on a different datasheet.

Standard NVG output is balanced for situations where all lights are dual mode. Enhanced NVG output is for cases where not all lights are dual mode.

## Light output distribution

IES/LDT files available on request



## Standards

- NVG compatible IAW Def Stan 02-587 Part 3
- EMC compliant to Def Stan 59-411 and IEC 60945
- Environmental testing to MIL-STD-810G
- Reliability analysis IAW MIL-HDBK-217 CN2
- Ocular hazard analysis IAW BS EN 62471:2008
- Electrical safety tested IAW BS EN 60598-1

Consolite is a long established leader in night vision lighting for military platforms, designing and manufacturing lighting for NVGs for over 25 years, including lighting for aircraft, ships and ground use.

Consolite's design facility permits the calculation of lighting requirements for any space from a single compartment to an entire ship.

Consolite's test facility includes the latest equipment required for testing night vision compliance to any relevant standard plus goniophotometric equipment for full 360 degree light characterisation of luminaire output.