

# CONSOLITE® F<sup>ORENSICS</sup> Ltd

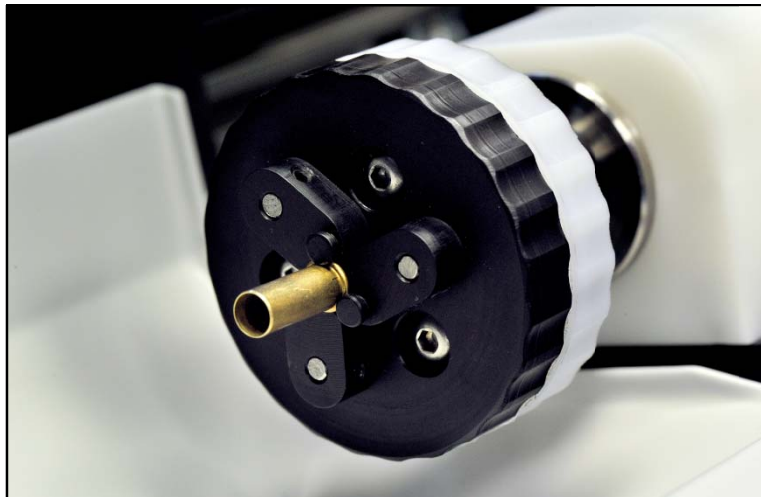
## CARTRIDGE ELECTROSTATIC RECOVERY AND ANALYSIS (CERA™)



[WWW.CONSOLITE.CO.UK](http://WWW.CONSOLITE.CO.UK)

CERA identifies fingerprints from spent cartridges using Dr. Bond's patented and Daubert standard approved process.

Place your sample in CERA's soft jaw holding system

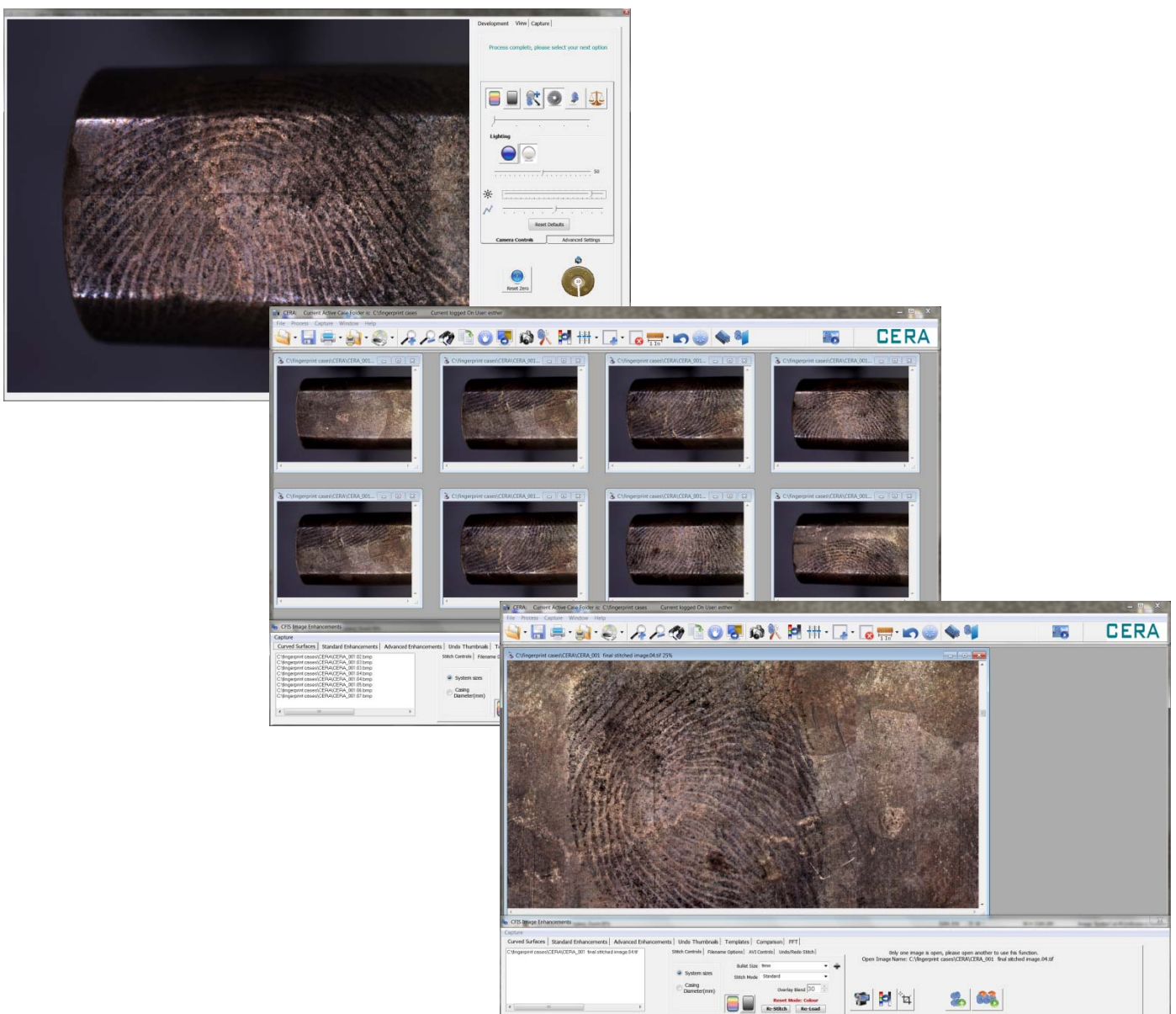


- CERA Measures the cartridge
- Illuminate the cartridge for live view
- Apply powder to cartridge
- Image the circumference of the sample



## CFIS takes the CERA generated images and joins them

- System specially developed by an acknowledged expert in the field of forensic imaging
- Extensively tested to ensure reliability
- All settings are user defined and controlled
- Controls CERA lighting system
- Aids image enhancement by the user
- Exports straight to 1:1, AFIS or IDENT1 formats
- Provides court chart applications
- Creates fully traceable audit trail

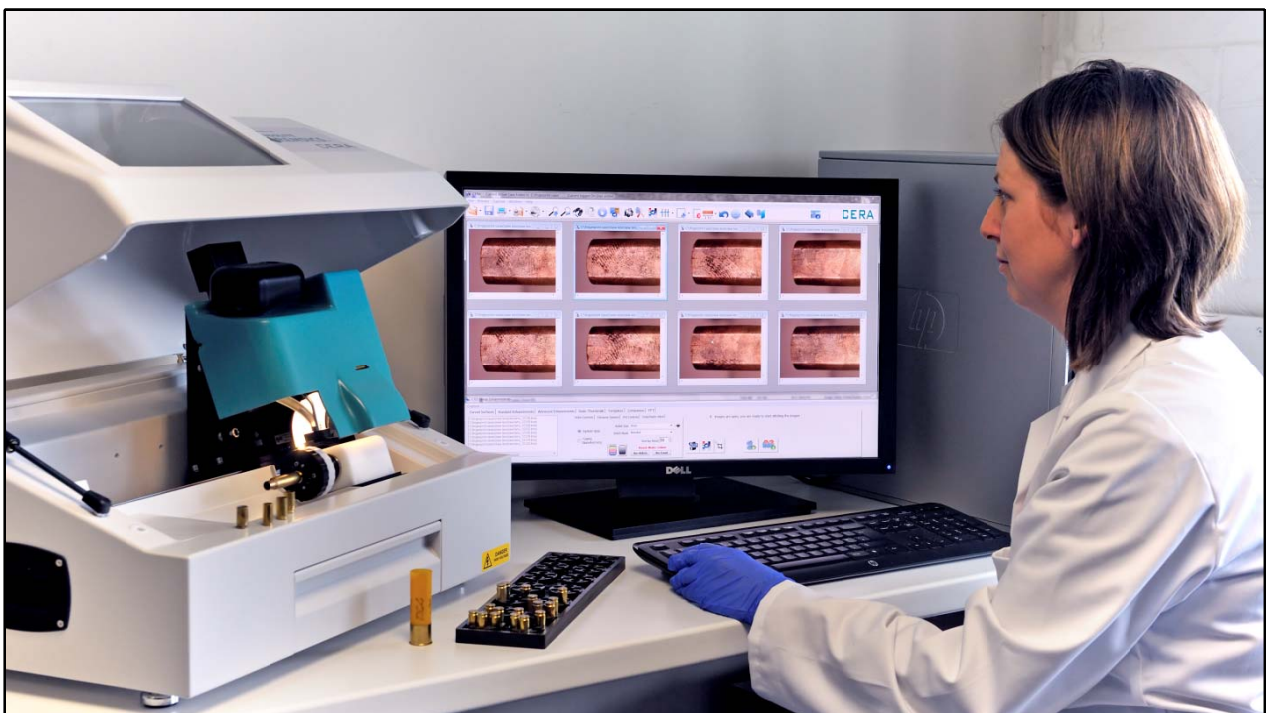


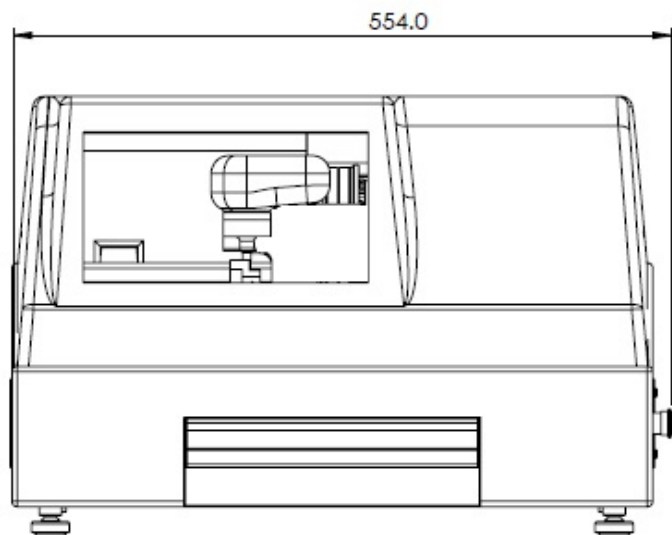
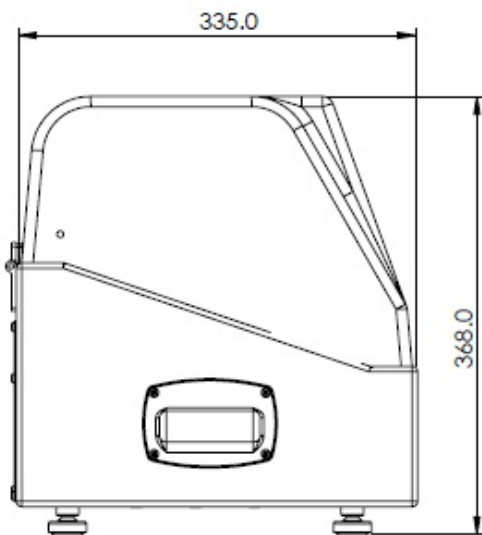
## FEATURES OF CERA™:

CERA discharged cartridge case fingerprint enhancement system complete with image capture system and uniform and oblique lighting systems. For use with Consolite Forensics Imaging System (CFIS) package, supplied on a Windows 7 equipped computer with a 24" monitor.

## ADVANTAGES OF CERA™:

- Quick and simple to use
- Installation and training provided
- Fingerprints extracted from discharged cartridge cases
- Automated operation – Minimal training required
- Traditional techniques can be used before CERA
- Full range of cartridge cases accepted
- Fully integrated camera and lighting system
- Sophisticated image processing with custom lens
- Process can be paused or aborted at any time
- Cylindrical object holder 1mm – 25mm dia.
- Capacity: From 0.22" Rimfire to 12 bore Shotgun
- Through shaft clamping for screwdrivers





### **SPECIFICATION:**

- Dimensions: 554 x 368 x 335mm (22" x 15" x 13")
- Weight: 19 kg (42 lbs)
- Voltage: 96 - 264V AC
- Provided in a rugged flight case
- Provided with server grade computer
- Provided with high resolution monitor
- Provided with contrast enhancement filters

### **AFTER SALES SUPPORT:**

Advice and training is available from the Consolite Support Team.

### **PATENT INFORMATION:**

The product is protected by International Patent Application No. PCT/GB2008/001261 and corresponding applications worldwide, as well as International Patent Application no. PCT/GB2009/002540

US Patent No 8,142,834

“A shot was fired at the scene, projectile entered the deceased, killing the man. When police arrived at the scene they found the deceased and a fired gun cartridge some feet away. A local search produced a gun in a dumpster. The bullet and the cartridge were a match to the gun. There were no fingerprints on the gun. Using the CERA process created the best chance of finding a fingerprint to match a person to that gun.”

“Identifying a suspect early in a murder case can save hundreds or maybe thousands of investigative man hours. CERA can recover evidence from fired gun cartridges within an hour and export to AFIS.”



CONSOLITE FORENSICS LTD.,  
ST. MARTINS BUSINESS PARK,  
BELLS LANE, ZEALS,  
WILTSHIRE, BA12 6LY, UK

[SALES@CONSOLITE.CO.UK](mailto:SALES@CONSOLITE.CO.UK)